



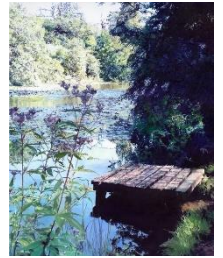
Broadway Art Competition Exhibition 2022

The Art Competition Exhibition of Finalists is part of the Broadway Arts Festival and is an annual art competition open to any artist, in any medium including painting, sculpture, drawing, textiles, ceramics & printmaking. Artists' work that is selected for the final judging stage will form an exclusive selling exhibition at [Broadway Museum & Art Gallery](#) on the High Street in Broadway from **21st – 30th October 2022**, open daily from 10am – 4:30pm. Entry to the exhibition (and museum) is free. This beautiful Broadway landmark is in prime position in the village, with very good passing foot traffic. The exhibition will be displayed over 2 floors of professional gallery space in this stunning 17th Century former coaching inn.



Our DAN member **Susan Birth** was delighted to report that her painting, Edge of Beyond, was selected as one of the competition finalists for the Open Art Competition. Many Congratulations Susan!

Here's a preview of some of the works being displayed and for sale at the exhibition. There were 550+ entries from across the UK and the 150 finalists and prize-winners form this exclusive selling exhibition. They say "We are so excited to showcase the incredible talent!"



The exhibition promises to be an exciting array of beautiful works in a huge range of style and to fit every budget. So, if you have a bare wall, nook or windowsill and are looking for a bespoke piece of British art, we'll see you there. The festival is an arts charity, so all the funds raised go towards our outreach projects with local schools, bursaries for local university students and the next festival (June 9-18 2023)". Full details [here](#).

Our Members' Work on Show



Jenny Wilson, wife of our own **Graham Wilson**, who sadly passed away recently held a wonderful retrospective weekend exhibition at Redditch Kingfisher centre.

Jenny wrote to say "It was a successful weekend- The exhibition went well thanks to all the hard work from AIR and Lickey Hills Art Society members who put in much time and effort supporting me so



that I could put on this exhibition of Graham's work. We were busy with visitors right from the moment we opened on Friday and many of the people who came had lovely memories to share of meetings they had with Graham either attending demonstrations, buying or commissioning a painting so the weekend turned into a celebration of Graham as well as an exhibition of his work which was lovely if quite emotional at times. It was just a shame Graham couldn't be there, he would have loved it!"

Jenny will be exhibiting some other of Graham's paintings in the November Pop Up gallery at the Kingfisher organised by AIR. Something to look forward to!

Local Art Events



Droitwich Spa Art Club was featured in our local paper when they presented the Club's first art exhibition which was held at the library. Our own Councillor **George Duffy**, the Mayor of Droitwich Spa, opened the event and the launch/private view was attended by many friends and family; it was particularly nice to see Paul and Kate, late of Parks Café, joined the hoard! The Art Club is open to all and meets on Monday mornings, 10am – 12am at the Community Hall. Contact me [here](#) for further information.

EXPLORE LARGE SCALE DRAWING: Develop your creativity through structured and stimulating drawing activities. This is an opportunity open to all. Each monthly workshop takes a slightly different focus so people who return are able to continue developing their experience. This is open to artists and non-artists – those whose artistic ability is highly developed to those who lost their creative confidence back in their school days. These sessions feed a need to be playful and appreciate the pleasure in making basic drawn forms, movements and mark making. We learn and experience the transition from small to large scale making. We learn and experience the transition from small to large scale making. For further information, click [here](#).



FLOURISH & FORB MARKETS are seasonal artisan markets held at The Granary, St Martins Quarter, a gorgeous venue in the heart of Worcester. They are now gearing up for their Autumn market! Open from 10.30am - 4pm on **Saturday 15th October**. They have 30 talented local artists, makers and designers taking over two floors with their craft wares. They say “This is going to be our biggest and best market yet, and we'd love to see you there!”

HANBURY HALL. Autumn Craft Sessions; Make your own brilliant bats, spooky spiders webs and peculiar pumpkins out of craft materials at Hanbury Hall's Autumn Craft Sessions. Get crafty with us in the Stableyard Archway this October half-term and make your own spooky creations to take home to amaze family and friends. Drop-in, £5 per craft pack containing 3 different activities.

NORBURY THEATRE: The Norbury Theatre and Cinema is 100% volunteer run and offers an intimate venue for many varied events throughout the year. We have an extensive programme including a number of bookings by professional hirers and also high-quality amateur productions. We offer films, music, dance and theatrical productions. Go to their website and contact them [here](#)

DAN October Meeting

19th October at 7.30pm. The CVS Centre at the Old Library Building, Ombersley Street East, Droitwich



On Wednesday 19th October we welcome local crime writer Carla Kovach. Carla is a USA Today bestselling author. Her most ambitious and popular books to date are the Detective Inspector Gina Harte series. Gina Harte has been number one in various countries in iBooks and on Amazon. The first book in the series was called “The Next Girl”. This was soon followed by “Her Final Hour” and then “Her Pretty Bones”. Carla is currently on book twelve in the series. As well as novels, Carla has written stage and screenplays. More information can be seen at www.carlakovach.com If you own any of Carla's books, bring it to the meeting and Carla will be delighted to sign it.

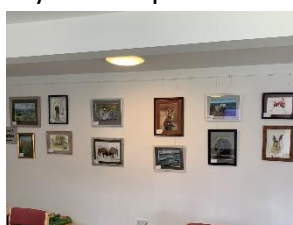
Carla is no stranger to Droitwich Spa appearing in Droitwich ArtsFest in both 2017 and 2018, reading in the open air in St Andrews Square. Carla has also directed a play at the Norbury Theatre.

DAN Meetings 2022

- **Wednesday October 19th** - Published crime thriller author **Carla Kovach** will give a short talk and then throw it open to questions.
- **Wednesday November 9th** - Workshop. Christmas wreath for door. **Amanda Coldridge**
- **Thursday 8th December** - Play reading and light refreshments

Exhibitions by Members

At our usual venues **Chris Walker** is exhibiting at **Parks Café** and at **Julia Rollit** will be exhibiting at **The Button Tree** during October. **Tina Watkins** is displaying 12 pictures at **Corbett Medical Centre**. **Julia Rollit** will be displaying her work at the space under the stairs at the library. A few pics from Corbett Medical Centre.



DAN September Meeting



About 20 members and visitors enjoyed a Poetry Evening led by former Worcestershire poet laureate Nina Lewis. The session featured international poetry winner (and member of Droitwich Arts Network) **Colin Jack**, together with Derek Littlewood, Penny Hewlett, Sue Thomas, and **Alison Lester** (member). Photos courtesy of **Rhys Jones**

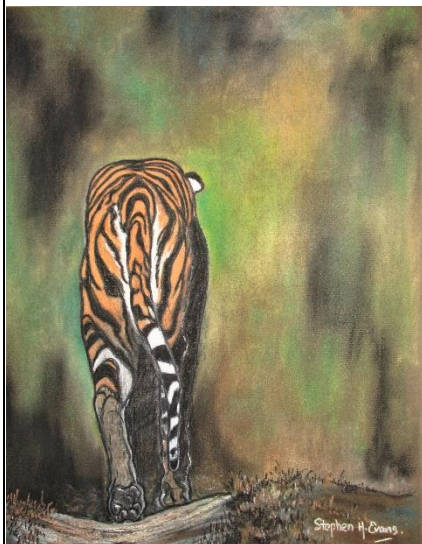


ALL ARTS ALLEY

Thank you to everyone who sent in their splendid photos. Well done all! We now know there is more talent out there and we are asking for more **ANY ART BASED WORK**. I just need photos of your work with any information you wish to disclose, to show in the coming newsletters. Send by email, [HERE](#). **By 30th October.**

Stephen Evans sent his 'Evening Stroll into Extinction'.

The charity Explorers Against Extinction does valuable work to raise money to protect endangered



species. Every year it holds an art fundraiser, Sketch for Survival, which is open to all artists. The deadline this year was 30th June from which only 100 paintings were selected to be hung in exhibitions in London and Edinburgh, alongside work from

professional and celebrity artists. All works are for sale/ auction raising much needed funds towards the Charity's work.

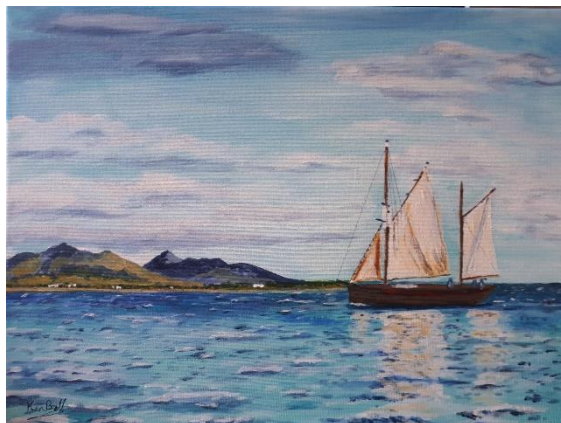
My work was unsuccessful this time but I enjoyed the challenge and will try again next year. Mind you, there are thousands of entries so selection must be quite difficult for the judges!

For more information visit

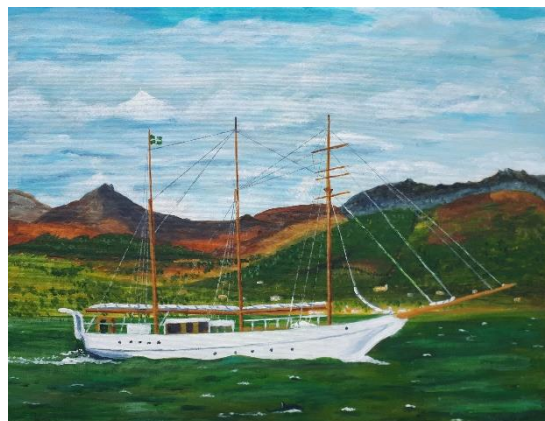
www.explorersagainstextinction.co.uk

Ken Winnall sent in these magnificent ships!

The sail ship Leader, off the coast of N. Ireland, passing the Mountains of Mourne as she enters Carlingford Lough. The ship is used by The Atlantic Trust.



A further painting of another sailing ship called the Grace O'Malley. Again, this is owned by the Atlantic Youth Trust. It's named after a female Irish pirate.



Clare Knighton says "It's a watercolour and ink tree, I called it 'Season 3' and really enjoyed mixing the rich orange tones for the tree. Quite happy to hang it in

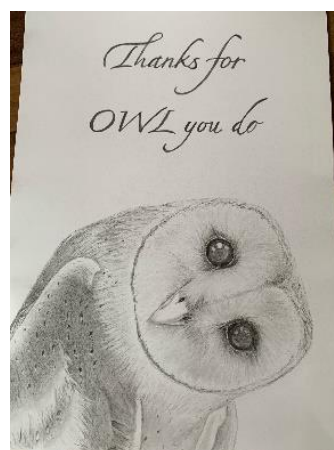
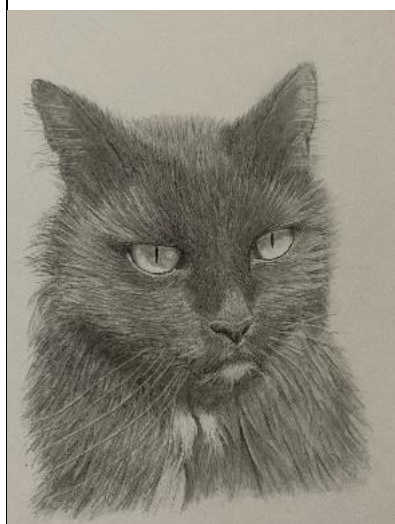


my studio 😊. Having ADHD means finishing things can be a real challenge but this one is good to go!"

Tina Watkins "As Autumn rears its head, here's my nod to it, 'Misty Morning'"



Rob Millward sent "Some recent portraits I've done for people".



For the latest information visit: <http://www.droitwichartsnetwork.org/> on Facebook
<https://www.facebook.com/groups/208713719174369/> e-mail tina.watkins@ntlworld.com