



### DAN En Plein Air May Meeting



Members of **Droitwich Arts Network** were painting, drawing, and composing "en plein air" during the afternoon of Sunday 14th May, in Lido Park in the area surrounding the band stand. It was such a lovely day! The sun shone, the brass band played, and Little Al's cafe served



the best hot bacon sarnies in the world! A selection of the lovely paintings made on the day is featured further in the newsletter. Pics by **Ruth Bourne**



the best hot bacon sarnies in the world! A selection of the lovely paintings made on the day is featured further in the newsletter. Pics by **Ruth Bourne**

En Plein at the Lido Park by **Karen Read**

*A beautiful day in the Lido today.*

*The DAN members have come out to play.*

*Some with brushes and paints and canvases blank.*

*Some with pens and paper and crafts on their laps.*

*The sun obliged, the wind was light, not a cloud in sight.*

*All looked for inspiration in the green canvas bright.*

*The sunlight is dappled on the tarmac path, reflecting on the children legs spinning on bikes as they race past.*

*The chatter of families and the barking of dogs, the sound of trumpets as the brass band starts to hum.*

*Daisies stand to attention as they play, its free to all no need to pay.*

*The music soothes as songs from the past are reunited with memories of times gone by.*

*Ice creams are dripping in warm hands from the red and white cart.*

*People giggle as they catch the drips with quick lips before they melt.*

*Birds are flying gracefully high in the sea blue sky.*

*The temperature drops and it's time to leave, we all look at what we have achieved.*

*As DAN members start to pack up their creations and smile, photos are taken to remember the day when we created with inspiration from this beautiful day.*

### King Lear Prizes – Register Your Work with Group Entries



The [King Lear Prizes](#) is a national creative arts competition for older people (60 and over) run by **King Lear Arts**. The *King Lear Prizes* was launched to encourage people to produce new works of literature, drama, poetry, music and art during the pandemic. We are delighted to announce that the King Lear Prizes are back with a new competition.

**Hopefully many of you have already submitted entries. When you do, please remember to select **Droitwich Arts Network** from the pull-down list of groups.**

They say; "It's been another great weekend of sign-ups - thank you so much to those of you who have registered your interest for this year's competition! There is **still time to register** using the button below. When ready, remember to **submit your work** using the online form."

[Register Your Interest](#)

[Submit Your Entry](#)



## Staffing an Art Stall at Droitwich Festivals – what is it like?



**Rosie Philpott** first burst onto the local *art* scene in 2012 with her 'Wonky Droitwich' painting, depicting Droitwich Spa's High Street in a quirky style. Since then, the original and a limited number of 250 prints have completely sold out and fans of Rosie's work have been requesting another version!

I asked **Rosie** how it felt to take on the responsibility plus all the hard work of having an art stall at Droitwich Festivals. **Rosie** says *"I always have a stall at Droitwich's three main festivals spread throughout the year: St. Richard's Festival, the Food and Drink Festival and Salt Fest. Manning a stall is a great opportunity to network, meeting new people and catching up with old customers. I find that my customers*

*expect me to be there now and will come and find me to look at new paintings and discuss paintings they have bought/commissioned in the past.*

*There is no doubt that a three-day festival is very hard work but it is really worthwhile. It provides work throughout the year and is a great way to reach those who haven't seen my work before or visitors to the town. The public is very supportive and encouraging. My most successful day at the recent St. Richard's Festival was the day of torrential downpours (not the glorious sunshine) so it just goes to show that, whatever the weather, the events are well attended. There is always a joyful atmosphere that you can't help but feel. "*



### Upcoming Events in 2023:

**Droitwich Spa Food and Drink Festival: 24th-25th June 2023; Salt Fest: 1st-3rd September 2023**

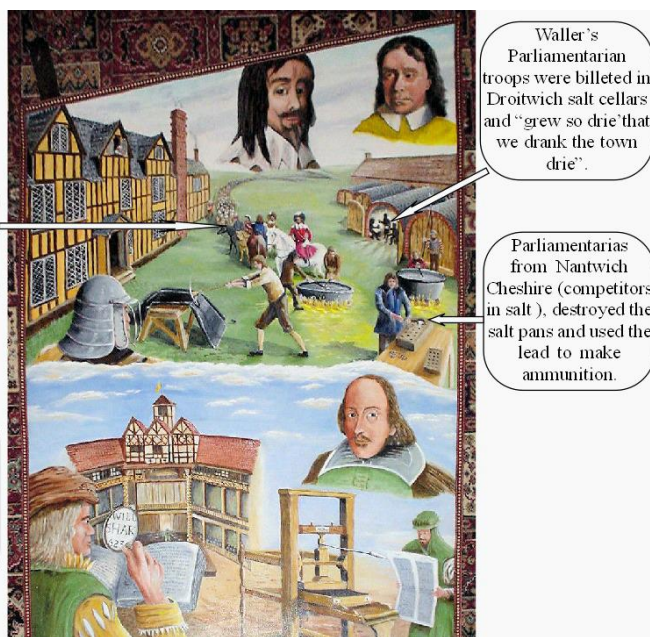
## 400<sup>th</sup> Anniversary of Shakespeare's First Folio

The First Folio is one of the great wonders of the literary world. Published in 1623, seven years after the death of its author, it was the first printed edition of Shakespeare's collected plays. Without this achievement, we would have lost half of his dramatic work.

**CIVIL WAR IN DROITWICH:**  
1642 - 1649

**KING CHARLES I VISITS DROITWICH MAY 11th TO 14th MAY 1645 ON HIS WAY TO HEREFORD.**  
Possibly stayed at what is now the Raven Hotel.

**JOHN HEMINGE, BORN IN DROITWICH 1556, EDITS AND PRINTS THE FIRST FOLIO OF SHAKESPEARE'S WORKS. 1623**  
(Without his, and co-editor Henry Condell's action there could have been no 'Shakespeare'!)



Waller's Parliamentary troops were billeted in Droitwich salt cellars and "grew so drie that we drank the town drie".

Parliamentaries from Nantwich Cheshire (competitors in salt), destroyed the salt pans and used the lead to make ammunition.

John Armstrong of the Droitwich Spa History and Archaeology Society (DSHA) has been in touch with our chair, **Helen Karakashian** who hopes that DAN together with the DSHA and students from Droitwich High School could help celebrate the 400<sup>th</sup> year anniversary of Shakespeare's first folio edited and printed by Droitwich born John Heminges (with Henry Condell). **Helen** says; *"John is particularly interested in having some poetry written to celebrate the event - the plan is for events to take place throughout the year... over to you **Karen** for ideas - but I am sure illustrations would be equally welcome. I*

*thought it was worth thinking about and also sharing with our members some of whom could be very interested in this project.*

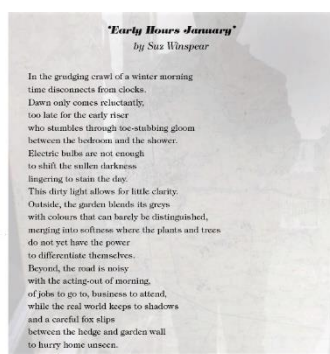
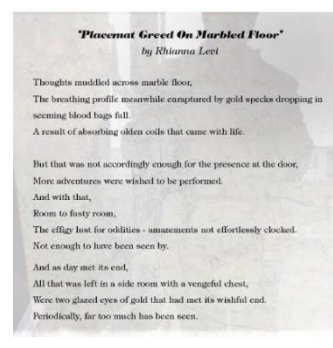
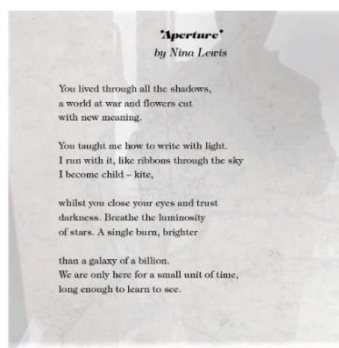
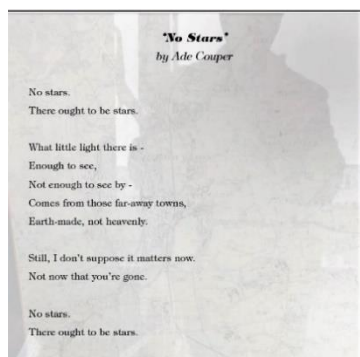
*I have been in touch with the link school governor for English at DHS. It is possible that some performance / readings could take place in their outside performing space. However, it is not the best time to be adding items to the school curriculum in the midst of exams! More to follow "*

**Ledbury Poetry Festival Friday 30 June 4pm to 5pm;** Abigail Rokison-Woodall kicks off the celebration of Shakespeare's First Folio. A conversation about the poetry of the plays. Live Stream on Zoom £10.

## DAN 2023 Programme

- **Wednesday 21<sup>st</sup> June.** DIY session in the Droitwich library. Bring your own materials
- **Wednesday 12<sup>th</sup> July.** A 'show and tell' and poppy making session in Droitwich library.
- **August – Summer Social Event.**
- **September - a Saturday En Plein Air event.**
- **Saturday 14<sup>th</sup> October.** A table top and Auction event.
- **November – a Monday Zoom meeting with an artist / demo speaker.**
- **December - at the Old Cock Drink and Doodle.** Social, fun, art.

## Enough to See – Yew Trees Artists



Poems by the five Worcestershire Poets Laureate who earlier this year responded to the theme 'Enough to see... but not enough to see by'.

We're very much looking forward to seeing the writing entries submitted for our Open Call and displaying them in the **Enough to See Showcase Exhibition from 10 to 17 June** at our studios and Bevere Gallery.

Join us at Yew Trees Artists' Studios at Bevere Gallery for a Showcase of Art, Writing and Music. Poetry Readings and Prize giving on Saturday 17<sup>th</sup> June, 12pm – 4pm, Litfest Finale and Social, on Saturday 17<sup>th</sup> June 4.30 – 7pm.

This project is sponsored by The Arts Society Worcester.

**Guest Artist at Yew Trees Artist Studios:** on Saturday 3 June 10am – 4pm is Worcester painter and DAN member **Margaret Powell** who creates joyful flower still life paintings, landscapes and felines in oil and acrylics.

## What's On in Worcestershire

**the WORCESTERSHIRE Litfest & fringe**

always bring you the city's liveliest dedicated poetry - spoken word and music events, and now we present!

*the Litfest Week of Festival!*

**From Sunday 11th until Saturday 17th June** 2023

Always featuring the very finest poets, storytellers, performers, writers and musicians both locally and internationally. Litfest and Speakeasy are the launchpads for the new, the young and the unsung, from the page to the stage...

Celebrating our 13th festival - a week of fully LIVE poetry, music, comedy and dashed good fun - celebrating thirteen lucky years of LITFEST!

**COMING SOON!**

**Sunday 11th:** The opening event including all our competition finals @The Swan Theatre together - The Moors, Worcester WR1 2ED\*\*

**Monday 12th:** A night of Storytelling @The Kings Head, 67 Sildbury, Worcester WR1 2HU\*

**Tuesday 13th:** The '42' Festival Special @St Swithun's Church, Church Street, Worcester WR1 2RH\*

**Wednesday 14th:** The Antipoet - @St Swithun's Church\*

**Thursday 15th:** The Festival Special SPEAKEASY @St Swithun's Church\*

**Friday 16th:** A night of comedy, music, youth and all round fun! @The HIVE, Sawmill Close, The Butts, Worcester WR1 3PD venue TBC\*

**Saturday 17th:** An open air afternoon of lovely poetry, music and competitions in the delightful countryside setting of Yew Trees Artists Studios @Bevere Gallery, Bevere Lane, Worcester WR3 7RQ\*\*\*

\*Young performers from 7.30pm \*\*All evening performers from 8.30pm \*\*\*All evening performers from 12.30pm

To book performance slots, venue information or to find out more, email us: [bookingsworcslit@gmail.com](mailto:bookingsworcslit@gmail.com)

All our events are FREE but we will offer a 'Pay what you feel' donation policy

[worcestershirelitfestfringe.wordpress.com](http://worcestershirelitfestfringe.wordpress.com)

**The Litfest Week:** Since the Pandemic our Festivals have been online, hybrid and LIVE. This year, after 3 years of changes, our WLFF Festival 2023 (the 13th year) is totally LIVE in venues around Worcester and the county.

Due to Covid 19 and the current Cost of Living Crisis we dropped the £5 charge for events. We do have a raffle at some events and an option to PWYF (pay what you feel) by throwing extra into the bucket, if you are in a position to do so.

**A Night of Storytelling** (Monday 12th June) does come with a charge which includes your entertainment and food. For ticket information scroll down our website to the event. Click [here](#) for the website

**All donations are appreciated and secure the future of WLFF Events throughout the year.**

I can thoroughly recommend **The Antipoet** if you like your humour clever and rude! We shall be going



along on Wednesday 14<sup>th</sup> to see them at St Swithuns church. See you there! Expect anarchy! Tina



**Broadway Arts Festival:** from Friday 9<sup>th</sup> to Sunday 18<sup>th</sup> June.

Last few places available for our en plein air painting & sketching workshops in June. Exclusive locations & excellent tutors:

- [Jenny Aitken ARSMA](#) Sat 10th June (Willersey)
- [Penny German Art](#) Thurs 15th June (Springfield House Gardens)
- Tim Fisher Artist Sat 17th June (Willersey)

The perfect creative day in some of the most beautiful Cotswolds settings.

Buy your ticket at:

<https://broadwayartsfestival.com/events/category/workshops/>



**Worcester Wildlife Trust:** June is a great time to get closer to nature! Why not take the opportunity to visit us at Lower Smite Farm and take a stroll on our nature trail as well enjoy a couple of events!



On **Saturday 10<sup>th</sup> June** we'll be hosting our first ever summer craft fair. Whether you're an art admirer or a furnishings fan, come along and support local crafters as well as browse the Trust's range of gifts and cards. It's free to enter and we'll have a selection of tasty treats, tea and coffee to fill up on.

Celebrating the midpoint of June's 30 Days Wild, we'll be running our Big Wild Family Day on **Saturday 17<sup>th</sup> June**. Bring the little ones for some wild experiences including sweep netting, pond dipping and wild crafts. It's free to join in the fun and we've got plenty of onsite parking.

[Check out our events page!](#)

**DAN Exhibitions**

Parks Café: **Julia Rollit** will be exhibiting *during June*.

Button Tree Café: **Margaret Powell** will be exhibiting *during June*

Corbett Medical Centre: **Sheena Howarth** and **Jo Morris** will be exhibiting in June

Droitwich Library: **Alison Latham** will be exhibiting in June.

**The Guidelines for displaying your art can be found in the Members' Area of the DAN website.**

**En Plein Air Paintings**

**Tina Watkins** painted a compilation of Lido Park attractions in pen and ink wash on watercolour paper.



**Derek Webster** sent in his painting finished off at home after the en plein air event in Lido Park





**Wendy Simmons** sent in her final, spectacular piece.



**Colin Jack** sent this lovely painting and says "Attached is the painting I did, title can be 'Flowers at the Lido'"



**Rosie Philpott** sent in her finished, and wonderfully detailed painting call Art in the Park.

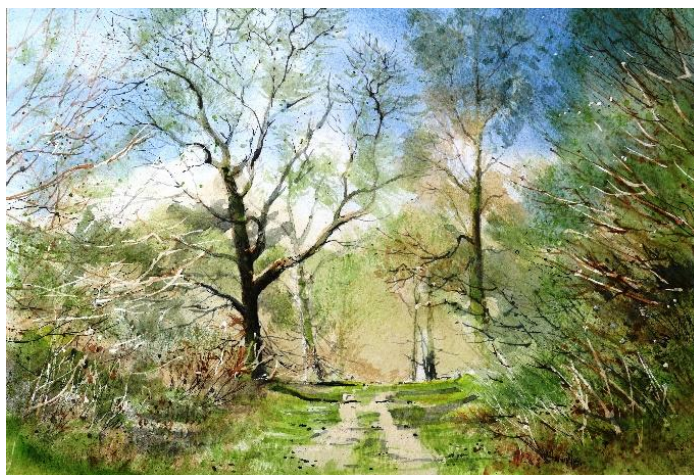
*(Rosie you've pictured me slim and rather young too.. I have been trying for years and nothing worked before this! Tina)*



**Julia Rollit** sent in her pretty watercolour and says "I started this at the Lido and finished it in Karen's studio"



**John Dugmore** sent in this lovely watercolour which he finished at our Lido event and says "I very much enjoyed the Sunday outing to the park and painting with fellow association members!"





## ALL ARTS ALLEY

Our All Arts project is continuing and we really do thank everyone who sent in their splendid artwork photos for this edition. If anyone has an idea for this spot, please do let me know – in the meantime please send in **ANY ART/CRAFT BASED WORK**. I just need photos of your work with any describing information, to show in the coming newsletter. Send email, [HERE](#). **By 30<sup>th</sup> June**

**Stephen Evans** sent in the following and says "A portrait of Polar Bear one of my Endangered Animal series which I have just placed on Facebook along with the Steppe Eagle.

Thought members would be interested to know that the paper used was white not black. I



drew the outline of the Polar Bear in pencil first and then painted the background using Prussian blue and Payne's Grey. This left me to work on the various shades of white fur working right up to the black background. My idea was to try and create the serious peril of the Polar bear, due its reducing ice habitat, by stretching the distressed looking face up in to the portrait. The dark background with the white fur of the Polar bear I thought added a sense of drama to the distress of the animal and I was pleased with the finished painting.



The Steppe eagle is spread across the grasslands of Asia, this mighty eagle clings on in the southeast corner of Europe in the Caucuses. I felt the close up of the eagle's face made a powerful statement for the serious peril it also finds itself in due the reduction of its habitat. Both portraits painted with watercolour on A3 300gsm paper. "

**Karen Read** sent in this lovely example of a Chakra bracelet that she made for the first-time last year.



**Tara Powell** sent in this lovely creation and says "As spring bursts into Summer, I find solace in the dance of the dandelions going to seed. They remind me that life is a journey, and sometimes we must surrender to the wind, allowing it to guide us to new and unexpected places. The dandelions teach us to embrace change and embrace the unknown, for within those seemingly ordinary moments lies the potential for extraordinary growth. So, I did this little ink drawing to remind me of this when they are long gone."



**Michelle Doidge** sent in this lovely sunset and says "This is a commission I have just completed in pastels of my customers favourite beach in South Africa where she grew up. It's a companion piece to a painting of mine she previously bought."

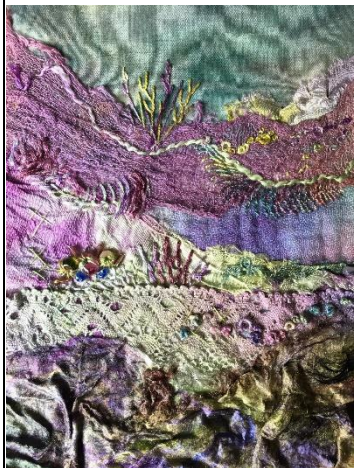


**Tina Watkins** sent in her painting of her great grandson. Pastel on Pastelmat as usual.





**Julia Rollit** sent in a sample of her textile art that will be displayed in Parks Café in June.



**Susan Cook** sent in her paintings below. Mixed Media  
-The Dress, Acrylic-Chaos and Untitled



**John Dugmore** sent in the following and says "I have attached some recent paintings and I am looking forward to exhibiting them with the DAN at the Corbett surgery in July"



**Kenneth Robinson** sent in these excellent (and occasionally funny) paintings and says "Helicopter - my eldest son asked for a painting of a helicopter this is the result, painted acrylic on artboard.



The lady is in fact my wife stroking our dog, yes, I know it's not our dog, hehehe it's still disliked and shares a corner of my art shak these many years since. Oil on artboard. The bird painting is of my Australian son holding a goshawk from a photograph. Acrylic on a very old art panel..... "