

DAN AGM - 2024



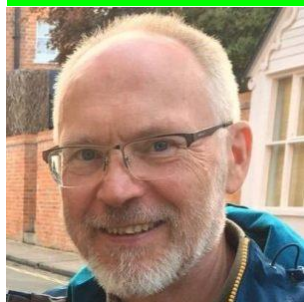
DAN welcomed members to its AGM at the Old Cock in Droitwich. It was wonderful to see so many members attending.

Firstly, **Helen** gave her report, detailed below, followed by **Rhys** who commented on the 2023 financial accounts. In brief he said that the committee agreed that during 2023 we should spend more on good venues, guest speakers, and promotional activities to attract additional members. Together with investment in the new Hub that opened in July 2023, this

resulted in a slight overspend over the year, but being in a healthy financial situation he recommended that there be no increase in membership fees. His full report is available if required.

After these brief formalities members enjoyed some comforting nourishment, served by the pub; giving members an opportunity to have a good catch up and network. The Committee would like to give a warm welcome to **Sue Cook, John Evans and Jessica Wood**, who have joined the committee.

New Committee Members



John Evans Outreach (Youngsters): took up art after he retired and just before the pandemic lockdowns began. He works mainly in watercolour with occasional excursions into pastel, ink, coloured pencil and charcoal. He says "I have benefitted from learning from other artists since I joined the Droitwich Arts Network and in turn, I am very happy to share my own thoughts, experience, knowledge, and encouragement within DAN and the wider community whenever I am able to do so."




Sue Cook Community Outreach: was born in Margate. Became a civil servant, caterer, involved with Sure Start in Slough, then Thames Valley Police. She was widowed in 2018 and is now an amateur painter/ crafter.

Sue made a proposal to the group at the AGM which will be further discussed at the next Committee Meeting. **Sue** has contacted a few local groups to gauge interest in holding an exhibition of their work as she believes this would help to raise our profile as active community players and encourage more participation.

So far, the Quilters, the Civic Society and four WI groups are interested. The idea would be to hold the exhibitions in the Hub on a Saturday. The logistics and organisation would be a matter for each contributor. **Sue** has considerable experience of organising events, exhibitions and competitions so would be happy to take the lead on this project.



 **Jessica Wood** Publicity: Jess has always been a creative, making art and painting.

She says "I am an artist, holistic therapist and offer art therapy for wellbeing and mindfulness. Most of my artwork is commissioned portraits of pets and people. I enjoy capturing the characters and seeing the different personalities come to life through my portrait drawings.

For my own artwork I do seascapes and landscapes with oil paints. Floral art and small crafts with watercolours. The art for creative mindfulness is a therapy for emotional healing, releasing negatively and finding an artistic outlet for a more peaceful mind."

Chair's Report



Helen Karakashian expressed great thanks and praise to both **Tina Watkins** (Newsletter coordinator) and **Rhys Jones** (website coordinator) for keeping members so up-to-date with everything that is happening in the network. In light of this, her report is brief as members are already so well informed.

The Hub: has been a huge success this year and is run brilliantly by **Rhys Jones** and his team. Thank you to all the volunteers. Stewarding at the hub is really worthwhile and you get to meet and know new members. You don't have to be exhibiting in the Hub to steward so anyone willing to volunteer must please speak to Rhys.

Dabbling Days: Our Dabbling Days were a huge success. We held one at Westlands Community Centre and one at the Hub, both of which were really well attended and we would like to hold more in 2024.

King Lear Prize: **Tina Watkins** entered DAN into the national King Lear competition group category and, as a result, we were awarded first place in the 'Group Mixed Media' category. **Tina Watkins** won two 'Highly Commended' and **Terry Baldock** also received Highly Commended for his poem on cartography.

Creative Writing Competition: We sponsored the competition at the High School again this year and will continue to do so. The competition is now attracting 70-80 entries so it has really taken off.

Events: As requested by members, we now have a regular social meet-up on the second Monday of the month (organised by **Wendy Simmons**).

Committee: The committee has worked very hard to create an exciting and varied programme for DAN members. However, this is your network. We welcome all ideas so do contact us with them! The committee remain determined to promote the arts locally and to grow the network. Thank you to the committee for their hard work. **Helen Karakashian**

DAN Bank Details

Please note that our account at Metrobank closed at the end of January. All payments should now be made into our account at Lloyds Bank. The details are: Account Name "Droitwich Arts Network", Account Type: Business, Bank Name: Lloyds Bank, Account Number: 1476 0363, Sort Code: 30-99-50.

2024 Programme

Drink and Doodles are usually first Monday of the month not second. With the exception of April and May which are bank holidays, so hence moving to the second Monday on those months.

- **Monday 5th February** - Drink & Doodle at the Hub (Members only)
- **Thursday 22nd February at 7pm.** Zoom life drawing session with 'Looking Sketchy' members and adults only.
- **Monday 4th March** - -- Drink & Doodle at the Hub (Members only)
- **March 23rd** - a Hub Dabble day possibly Easter themed - **we need volunteers for this event - do feel free to help.** Contact us [here](#)
- **Monday 8th April** - Drink & Doodle at the Hub (Members only)
- **April.** Clay/ceramic demonstration and 'have a go' session
- **Monday 13th May** - Drink & Doodle at the Hub (Members only)
- **May.** Pastel Demonstration in the Hub - members free
- **June.** Possible film night at the hub
- **Monday 1st July** - Drink & Doodle at the Hub (Members only)
- **July.** A Dabble day
- **Monday 5th August** - Drink & Doodle at the Hub (Members only)
- **August** - En plein air and picnic in Lido Park
- **Monday 2nd September** - Drink & Doodle at the Hub (Members only)
- **September** - possible Mini Arts Fest
- **Monday 7th October** - Drink & Doodle at the Hub (Members only)

Drink & Doodle 2024
 5th Feb, 4th March, 8th April, 13th May
 6.30pm - 9pm
 The Hub, St. Andrew's Square

Informal Social Event
Paid Up Members Only

Sit, Chat, Create
Meet Like Minded People

Bring whatever you are working on
Instant coffee and tea bags provided
Bring your own mug, flask, or soft drink

Enter and leave the Hub by the back entrance




www.droitwichartsnetwork.org

- **October.** World Mental Health Day with the theme 'Anxiety'. **Jessica Wood** will be involved with art therapy 'Creativity for Well-Being'. Also decorating the Hub window with poppies. Maybe an Art Competition with the winner having their painting displayed on the big easel
- **Monday 4th November – Drink & Doodle at the Hub (Members only)**
- **November** –Camera Club phone app tutorial (on Zoom)
- **Monday 2nd December – Drink & Doodle at the Hub (Members only)**
- **December** - Decorating the Hub for Christmas.

Mugs for Mugs? A new venture for DAN



Rhys has designed mugs printed with information about Droitwich Arts Network. See the photos. The information is printed on both sides which means the mugs are both left-handed and right-handed!

Please let **Rhys Jones** know via email: rhys@photomaestro.co.uk how many mugs you would like to buy, **before Wednesday 14th February**. He will then place a bulk order. The price will be a maximum of £6.50 per mug. The final price maybe be lower



depending on any available discount on the day of ordering, and includes 50 pence per mug towards DAN funds.

February Meeting – Life Drawing on Zoom

Everything is confirmed for the Looking Sketchy life drawing session on Zoom on **Thursday 22nd February at 7.00pm, for 90 minutes**. Full details to follow.

Local Art Events

Light Night Worcester



Come and be part of Light Night Worcester 2024! Light Night is back for two evenings in February half-term, with giant light-based artworks, colourful interactive installations, inspiring artistic commissions and entertaining walkabout artists, all highlighting their take on being connected.

This is a **FREE** event from **6-9pm, 14 and 15 February**, suitable for all ages. All the events will be in Worcester town's City Centre and should be accessible within walking distance of one another.

For more information visit www.severnarts.org.uk/light-night-worcester



Art House Open Lecture

February 6th, Castle Street Worcester WR1 3HN

Join the Art House Open Lecture Series for an enlightening experience as they present Season 11, featuring the esteemed artist and University of Brighton teacher, Matthew Cornford. This captivating event, hosted at the prestigious Art House in Worcester, provides a rare opportunity to hear directly from some of the UK's most exciting contemporary artists. Engage in thought-provoking dialogues with these talented individuals through Q&A sessions, and immerse yourself in Worcestershire's vibrant artistic community. Gain a deep understanding of artistic processes and influences as you delve into the world of Cornford, who is currently collaborating with John Beck of the University of Westminster on an ambitious project. Together, they are uncovering and documenting the former British Art Schools, a venture that has spanned over 15 years. Witness the culmination of their work through an ongoing series of solo exhibitions exploring various regions of the UK.

Admission is free, and online attendance is available via Zoom for those unable to join in person. Secure your spot by booking an online ticket, and a link will be provided to you prior to the event. Donations are welcome, with a suggested contribution of £3.

Exhibitions Guide

FEBRUARY Colwall Art Group An exhibition displaying a selection of artwork by members at the Gallery, Worcester Road, Malvern. Open from 10am-4pm and 5pm on Saturdays

UNTIL FEBRUARY 24 Ceramics and Art Exhibition Difference and Diversity in Clay. Featuring studio potters Bethan Lloyd Worthington, Claire Crouchman, Ninna Gøtzsche, Annabel Faraday and James and Tilla Waters. The Gallery at Bevere, Bevere Lane, Worcester. Telephone for opening hours.

UNTIL MARCH 14 Alphabet A Hayward Gallery Touring exhibition by Peter Blake comes to Droitwich Library, Droitwich Spa. Admission free.

UNTIL MARCH 17 Benjamin Brecknell Turner An exhibition of many of Turner's finest photographs taken in Worcestershire in the early 1850s. Worcester City Art Gallery and Museum, Foregate Street, Worcester.

UNTIL MARCH 30 Faces, Flowers, Figures An exhibition by Gilly Cotter. Her latest work incorporates her love of gardens and flowers with fine drawing skill. Worcester Arts Workshop, 21 Sansome Street, Worcester. Open 10am-5pm Monday-Friday and 10am-noon Saturday.

The Hive

The Hive has a rich and varied programme heavily influenced by the aim to support and promote the work of new and emerging artists alongside experienced local artists, groups and organisations. Find out more about our upcoming exhibitions below.

Snap Shot 2024 by Winslow Court Residents Monday 15 - Sunday 28 January The Atrium

Come and see the latest artwork made by residents of Winslow Court, which provides residential care for adults with complex needs. Their team believes that the desire to communicate is one of our most important human traits, and they use their art sessions to nurture and give value to their service users' creativity, self-expression and communication.

Fantasy: Realms of Imagination Tuesday 30 January - Sunday 25 February 2024

This exhibition offers a legendary quest through the impossible worlds of fantasy. From epic visions to intricately envisaged details, it celebrates some of the finest fantasy creators, reveals how their imagined lands, languages and creatures came into being, and delves into the traditions of a genre that has created some of the most passionate and enduring fandoms. Journey from fairy tales and folklore to discover how the oldest forms of literature continue to inspire fantasy authors, filmmakers, and game producers today. Gather your fellow adventurers and step through The Hive's portal into the realms of fantasy as it has never been chronicled before. Who knows where your journey will lead...

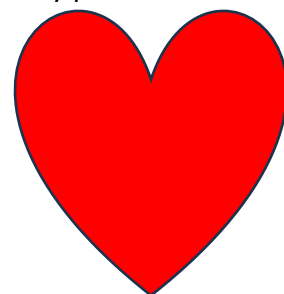
DAN Literary Corner



Karen Read, our literary representative has sent in a special Valentines Day poem
Love Yourself

I am sending a card to myself today to celebrate Valentines Day.
We have been through a lot my heart and I and at times things looked grey.
But we are here at this moment and embracing the day.
Saying I love you to myself is strange you know and not the right thing I am told.

So today I am making the decision to be bold and break the mould.
Once the words are on the paper I smile at the hearts and open the card and read.
"You are enough today and always, just believe."
Happy Valentines Day



Karen would really like members to send in their own poems. Contact Karen [here](#) with your ideas.

DAN Exhibitions

Parks Café: **Ken Bell** will be exhibiting *during February*

Button Tree Café: **Ken Bell** will be exhibiting *during February*

Corbett Medical Centre: **Tina Watkins** and **Fran Higginson** will be exhibiting in February

Droitwich Library: **Valerie Kerridge** will be exhibiting in February

The Guidelines for displaying your art can be found in the Members' Area of the DAN website.

ALL ARTS ALLEY



Our All Arts project is continuing in 2024 and we really do thank everyone who sent in their splendid artwork photos for this edition. If anyone has an idea for this spot, please do let me know – in the meantime please send in **ANY ART/CRAFT BASED WORK**. I just need photos of your work with any describing information, to show in the coming newsletter. Send email, [HERE](#). **By 28th February.**

Louise Broad sent in these lovely paintings and says *"These are some acrylics on canvas that were created following meditation. For this, plants and science came to my thoughts so I created an acrylic pour using various greens together with black and white."*



Felicity Robinson sent in one from her new series of work....And says *"working towards the Cheltenham Art Fair!"*



Karen Read our literary representative sent in this short poem.

"Jackie Magazine - Valentine Day Addition"

1972

My Jackie has arrived, and I look inside and gaze lovingly at part
3 of my poster.

Its David Cassidy's head and I move the poster closer.
Last night I dreamt about David and Donny, but I could not
decide who to marry?

I woke up in a flurry, so I better hurry I was going to be late for
school.

On page 3 was a cutout Valentine Card for me to send to my
heart's desire.

I'm filled with angst as there is no one I know I admire.
Its Valentines Day today and my form teacher said we must
make cards for our friends.

I reacted in despair as I look at my hair and the spots on my right
cheek and nose.

I should make a card for my dog instead I suppose.
I lean to one side and try to decide where to put David Cassidy's
head. On my ceiling or wall or secretly to kiss under my bed?
I will fill in the love's choice quiz on page 6 to decide who I am
going to marry.

I applied the free red lip gloss from page 9 and realised I better
get ready.

Jackie Magazine is 60 years old and as the years unfold. I
remembered this, Valentines Day.

I still have the bedspread, but posters have gone, and the spots
and the cards went away.

I remembered who sent me a card that day he is bringing me
breakfast in bed.

I tell him" I chose him instead, of David, and Donny".


"That was close then honey "he said.

Clare Knighton sent in the photo below and says *"I thought I'd write a short piece about my treasured Wednesday night activity- just over a year ago I signed up for a pottery*



class at Nunnery wood, my old school!! During the past year, not only have I been supported to create some wild and wonderful creations, I've been given really good cups of tea and

coffee, biscuits available too, but I've also gained a close bond with the Wednesday night regulars where we chat about everything under the sun! Clodagh the teacher puts up tirelessly with my humour and questions, and even on dark winter nights this group lights up my life. Here is a picture of one of my latest creations, who is currently drying before I glaze him!

Whilst I love my painting at home in my studio, this club I've become part of is better than any anti-depressant I take! Check out Clodagh Crafts if you fancy joining 

Terry Baldock sent in this winning poem, which won the Oldie poetry competition and appeared in the November issue. He says *"The theme was luggage and I hadn't realised that when the competition appeared it was Black History Month so it was very apt."*

Luggage

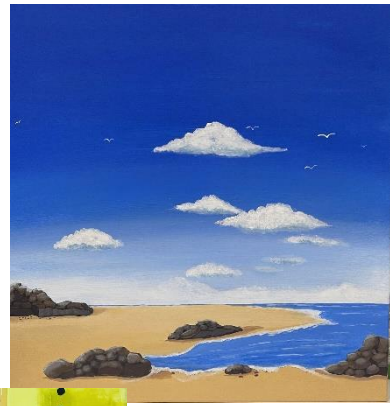
They were the Windrush generation.
Smart suits, shoes, ties, and hats.
Looking more like bureaucrats.
Anxious smiles, expectant faces.
Carrying small suitcases.

Much needed talents, useful skills.
Welcome hugs, open arms.
Then work in factories, or on farms.
Arriving here from far flung places.
Carrying small suitcases.

Some with excellent qualifications,
Given jobs on buses or trains.
Barely enough to tax their brains.
Worried about how they'd cope.
Carrying small suitcases

Filled with hope.

Maureen Wilmot sent in these examples of her artwork and says *"My name is Maureen Wilmot, I have been painting for 4 years and am looking forward to being part of DAN."*



Sue Cook sent in this painting.



Tina Watkins is delighted to have all 5 of her entries accepted at the CASE exhibition at the Herbert Art Gallery in Coventry. Open until 3rd March. All pastel on PastelMat as usual.



Frances Higginson sent in four paintings and says *“Being part of DAN and meeting other creatives has been a joyful and inspiring journey. Fantastic sharing tips, receiving encouragement and support. These are a few of my recent paintings...I think they are going to become part of a series called 'Daily Ramblers' as they are painting from photographs taking whilst walking the dogs.,”*



For the latest information visit: <http://www.droitwichartsnetwork.org/> on Facebook
<https://www.facebook.com/groups/208713719174369/> e-mail tina.watkins@ntlworld.com