



**MERRY CHRISTMAS AND A HAPPY NEW YEAR TO ALL OUR MEMBERS**

### Christmas and New Year Greetings from our Chair Helen



Warmest good wishes to all DAN members for a happy and healthy Christmas and New Year. Your committee has worked hard to organise a very successful year for the Network and it has been a real bonus to have a Hub where we can exhibit, arrange drop-in sessions for the local community and have our own social events too.

Thank you, **Rhys**, for all your splendid organisation and to all the wonderful volunteers without whom the Hub would not survive.

Enjoy the Christmas sparkle at the Hub and please let committee members know if there are any particular themes you would like covered at future meetings. **Helen**

### A DAN HUB of Activity!

It all started on 4<sup>th</sup> December with a **DAN Drink and Doodle**, which was an informal social event and then we held a 'Decorate the Hub for Christmas and Winter' event on 14<sup>th</sup> November. Members also bought in their art works to doodle over tea!



Then there was the "Feare Me Not" Poetry Competition to celebrate the 400<sup>th</sup> anniversary of the printing of Shakespeare's First Folio. The competition was organised wonderfully by **Karen** and judged by **Alison Jean Lester** who also kindly donated the prize. Well done to the winner James Mason and a well-deserved Honourable mention for Chris Wright who both read their excellent poems. Thank you for sharing your talent with us.



Another current activity is our "**Bargain Corners**" where DAN members were given an opportunity to bring in pieces of art that have been hanging around for a while or gathering dust. We were asked to bring in anything that we were prepared to sell for £25 or under and we well and truly filled the Hub! The area is now full so no more contributions can be taken for a while please.

FaceBook members can click [HERE](#) to see a video of these excellent but very inexpensive, artworks!

It was a great way to clear out studios and work areas. But also gives our visitors to the Hub a chance to buy some fantastic, affordable art. Whether you want to treat yourself or a loved one for Christmas, it's a perfect place to start.



Thanks must go to the **Chillax Arts Club** members for their lovely paintings and all youngsters are welcome to create winter / Christmas pictures that we will display in the Hub. This is not a competition and the details are on the DAN website.

Our next **DAN Drink and Doodle** will be held on **Monday 4<sup>th</sup> December** and we're looking forward to seeing our members (paid members only) at the Hub next week. This will be a last Drink and Doodle until Monday 5<sup>th</sup> February 2024.

**Wendy** is going to bring some Mulled Wine and there will also be mince pies (bring your mugs!) 🌲

Our AGM is in January which is also a great opportunity to meet other members and our committee.



## 2024 Programme actual and potential

- **Thursday January 11<sup>th</sup> 2024, AGM.** Members and partners are invited to our AGM, food and music will be provided. You will need to RSVP once invites have been sent out.
- **Several events as possibilities** have been suggested, they include a Film evening, En Plein Air (venue suggestions gratefully requested), Life Modelling for painters and photographers, Still Life sessions, Dabble Days and of course Drink and Doodles. Do send in any suggestions for next year.

## DAN Triumphs in the King Lear Prizes!



The "King Lear Prizes" is the national arts competition for people of all experience levels, encouraging older people to get involved in the creative arts and several of our DAN members entered. We also entered DAN as a group members and **WE WON the Group Mixed Arts Prize** click [HERE](#) and scroll down the page to see more information. We will be receiving a certificate for the group and a special edition King Lear Prizes 2023 anthology featuring our group when its published, we may even be featured in the Droitwich Standard

during December!

The King Lear General Manager sent us the following; *"Congratulations, **Droitwich Arts Network**, on clinching the mixed arts prize! Your win celebrates the brilliant diversity of your creations. From the intricate beauty of your portraits to the enchanting poem about a Mapmaker and his lost love, your collective works dazzled our judges and they are a testament to the importance of creating art as part of a group. Bravo on this well-deserved honour!"* Harry, General Manager of the King Lear Prizes.

As well as the DAN Mixed Art Prize, individual commendations were gained by **Tina Watkins** who received two Highly Commended mentions for her artwork and **Terry Baldock** who sent in a delightful poem, "Cartographer" which boosted the DAN involvement.

## Worcester Arts Collective

WAC's charitable aims are to support creative initiatives in Worcester to reach as many people and places as possible by:

- PROVIDING workshop and gallery space in the heart of Worcester.
- Collaborating with local initiatives and organisations to support creative projects.
- Resourcing creatives with materials and skills.
- Supporting sustainable business practice, mentoring and pathway to creative careers.
- Supporting those working with vulnerable, marginalised and other groups, creating safe spaces and best practice.
- Improving access to creative spaces and materials.
- Supporting work that promotes the therapeutic benefits of creative practice.
- Read all about it [HERE](#)

**Claire Hilton** sent in this article and says *"I just wanted to share this event in case anyone wanted to come and see our set up at Worcester Arts Collective and the exhibition space which would be available to hire. I will have prints, originals and cards available. There are 5 artists in residence to meet and ways to get involved if you want to know more!"*

*Closest parking is King's School car park. I'm afraid and as the venue is a listed building there's currently very little in the way of disability friendly access but I'm working on finding funding to make that better as soon as we can. Thanks"* **Claire**



## Local Art Events

### Christmas Events at Bevere Gallery

SATURDAY EVENTS AT BEVERE GALLERY AND ARTIST STUDIOS AT BEVERE

Bevere Gallery, Bevere Lane, Worcester WR3 7RQ

**Saturday 2 December** 1.30 pm to 3 pm - **The White Ladies Aston Singers** will entertain visitors with a selection of well-known Christmas songs.

**Saturday 9 December** 2 pm to 4 pm - **Ceramic Christmas Decoration Workshop** by Arts & Wonder, a festive workshop for all the family. Book online here: [www.artsandwonder.co.uk](http://www.artsandwonder.co.uk)

**Saturday 23 December** 12 pm to 1.30 pm – We're delighted to welcome **Claines Church Choir** to sing for us on this last Saturday before Christmas.

**En Plein Air Art Market** on **Sunday 3<sup>rd</sup> December** at Belle Vue Island, 31 Wells Road, Malvern

Local artists bring their art to Great Malvern's Belle Vue Island. Free event on Belle Vue Island with entertainment taking place every Sunday (10am – 4pm) .

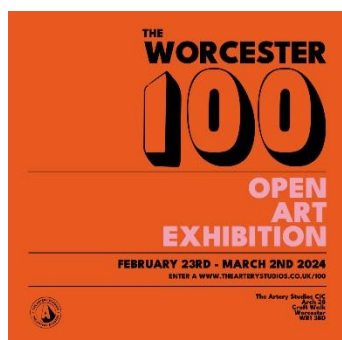
**Flourish & Forb Pop Up Artisan Market** **Saturday, December 9 · 10:30am - 4pm at the Granary, St Martins Quarter, Worcester WR1 2DA.**

These seasonal artisan markets are thoughtfully organised and passionately run by artists themselves, all united with the common goal of uplifting their fellow local creative businesses.

Flourish & Forb bring together a diverse array of talented artists, makers, and designers, each eager to showcase their exquisite handmade creations. From stunning jewellery to intricately crafted home decor, there's something for everyone. What's more, admission is completely free!

Join us at Flourish & Forb markets, where the spirit of artistry intertwines with the spirit of community. Engage with passionate artists, support local talent, and unearth remarkable treasures that will inspire and delight. Mark your calendars and get ready for an unforgettable day out that celebrates the beauty of handmade craftsmanship.

## One for Your Diary **The Worcester 100 Open Art Exhibition**



The Artery Studios – a celebration of Worcester's unique creative community welcoming entry from all levels, ages, background and experience. When we call it an open, we mean open.

Between **Friday 1st March – Sunday 10th March 2024**, the Artery Gallery will be filled with a showcase of 100 pieces of work by Worcester's local creative talent including paintings, prints, photography, sculpture, ceramics, and more.

There is no selection process, the first 100 entries will be successful. Simply pay for your place via our ticket shop (**deadline 22<sup>nd</sup> December**), complete the artwork submission form by January 31st and submit your work to us either on Thursday

29th February or Friday 1st March. We will take care of the rest. All participants plus guest will be invited to the launch night on Friday 1st March between 7-10pm. Get all the details [HERE](#)

## Christmas Carols by DWIG

**Droitwich Wind Instrument Group (DWIG) will be performing live Christmas carols in Victoria Square, Droitwich on December 9th at 2.30pm and on December 16th at 10.30am.**

There will be a collection bucket in the square for the Midlands Air Ambulance Charity. The group meet on the second and fourth Monday of each month from 3pm to 5pm at Crowle Village Hall, where all music reading brass and woodwind players are welcome.

### Open Carol Playing session.

All who play brass and woodwind instruments are invited to join us for a **single, free, carol playing session** inside at the Crowle Platinum Hall on Monday December 11th from 3 to 5pm.

Please contact group leader David Wornham by email: [flexicase@gmail.com](mailto:flexicase@gmail.com) or phone 01905 775840 for more information.





## Exhibitions by Members - December

**Felicity Robinson** is exhibiting at **Parks Café** during December and January. **Park's Cafe**, has space for 8 – 12 pictures depending on size. Park's Cafe has supported Droitwich Arts Network for a number of years. Artists provide their details so that members of the public can purchase pictures if they wish.

**Michelle Doidge** is displaying paintings at **The Button Tree, Tagwell Road; The Button Tree** has space for 3 artworks. This is an ideal venue for artists who want to try exhibiting their work without feeling the pressure to make sales and there's no charge!



**Tina Watkins** will show 8, and **Rosie Philpott** will show 12 paintings at the **Corbett Medical Centre, Corbett Avenue** where artists have a choice of rooms. The New Waiting Room has space to exhibit 12 pictures, and the Old Waiting Room has space to exhibit 8 pictures. The rooms can be booked



separately. Artists provide their contact details so that members of the public can purchase. The displays there really brighten the rooms and members have had success in selling works.

**Michelle Doidge** will show her paintings at the **Droitwich Library, Victoria Square**; There is space to exhibit 2 or 3 pictures in the small area below the stairs. Again, ideal for just showing a few works.

Being a paid member of Droitwich Arts Network offers lots of opportunity. Members can display their work for one month. Brief guidelines can be found in the members' area of our website. It is exciting and rewarding to show your work. Please contact Derek Webster to book your venue. [derekwebster20@aol.com](mailto:derekwebster20@aol.com).

## ALL ARTS ALLEY

Our All Arts project is continuing in 2024 and we really do thank everyone who sent in their splendid artwork photos this year, for this and all editions. If anyone has an idea for this spot, please do let me know – in the meantime please send in **ANY ART/CRAFT BASED WORK**. I just need photos of your work with any describing information, to show in the coming newsletter. Send email, [HERE](#). **By 30<sup>th</sup> December**

**Colin Jack** sent in these stormy paintings and says "3 painting of storm Babet up in my home town of Anstruther and the next village Pittenweem. Inspired by photos taken by friends up there"



**Colin** also sent news of his latest ventures! "On 1st November I visited North Claines Women's Institute here in Worcester. The talk was about my art:



techniques, styles, subjects and thoughts about Art generally. I took about 25 examples of my work, displayed on an easel by my beautiful assistant Rose, then exhibited around the room.

It was a very enjoyable evening, lovely friendly audience,

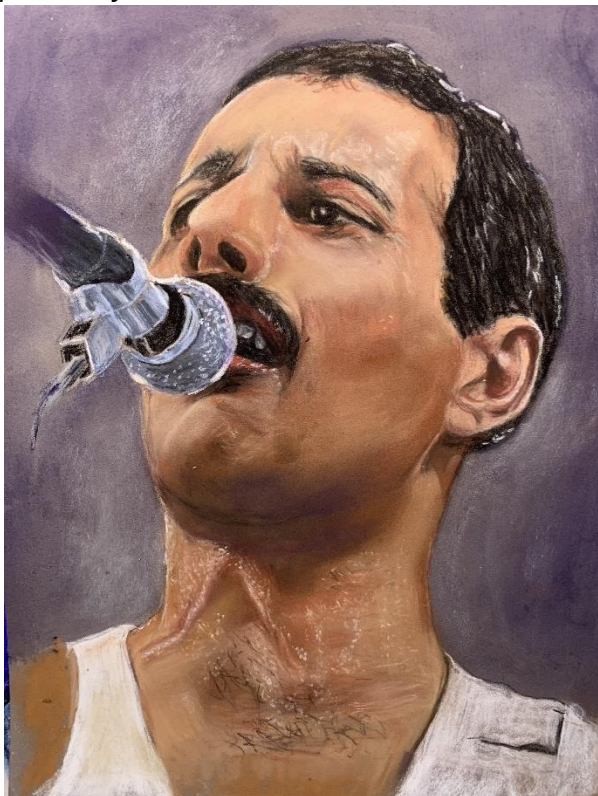
plus nice coffee and biscuits!

I am going back there some time to do a talk about astrophotography, showing equipment and images taken by myself."

Should be a great evening, Colin!



**Tina Watkins** says "Another portrait of Freddie- in pastels of course!"



**Peter Hawkins** sent in this acrylic painting and says "This was a result of a visit to Harvington Hall by the Canalside Studios art group in the summer. It was a very hot day, so the best place to paint was sitting under the trees and look across the moat to the rear of the property."



**Felicity Robinson** sent in these images and says "CSLewis 125 anniversary is celebrated in Malvern with a series of windows in the town shops all featuring the Lantern! In my window (at Mac n Jacs cafe) the lamp section displays my work 'Ice Flower'. I

also have one of my abstract organic paintings in the window inspired by Narnia, winter and birch bark! "Through the wardrobe...."



**Clare Knighton** sent her art photo and says "Saw these tiny frames- and felt compelled to order them and paint miniature pictures, the Robin has sold already!"



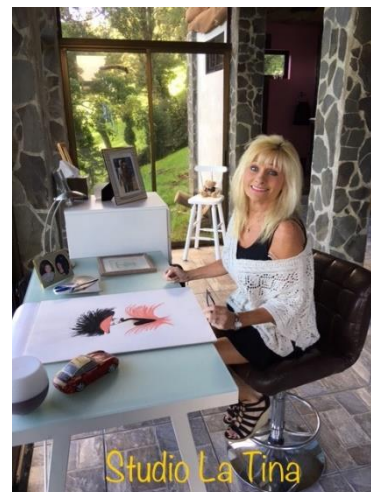




**Lyn Sharp** sent in these lovely creations and says "Mr Hare and Mr Fox made from up cycled textiles and wool "

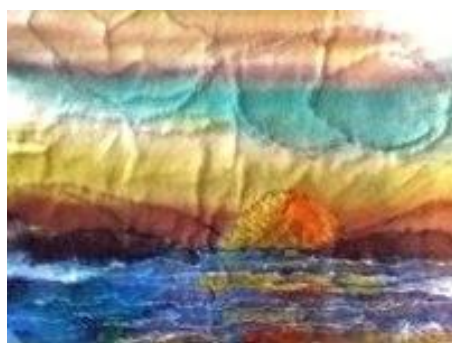
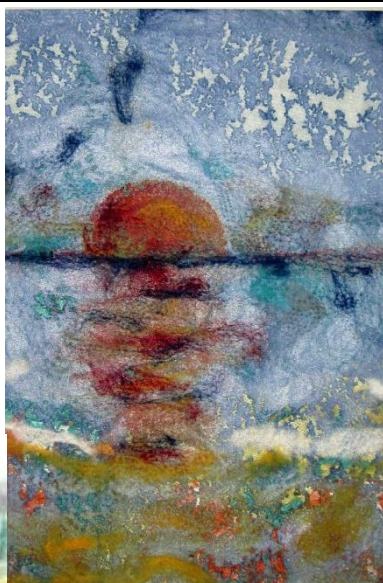


**Tina Wellings** is a new member and sent in this photo of her studio "You may wish to visit my website for other info on me and my work! [www.studiolatinacollection.com](http://www.studiolatinacollection.com)



**Valerie Kerridge** sent in these lovely paintings and says "They are both sunsets. The one with mountain background is free machine quilted effect and acrylic paint.

The other one is a sunset also distressed/burnt material and acrylic paint. Both are on display in the Hub"



**Chel Walton** sent in her recent painting created at a still life workshop held at the Droitwich Spa Art Club and says "Thought I'd send a copy in of our pen and wash workshop!"



For the latest information visit: <http://www.droitwichartsnetwork.org/> on Facebook  
<https://www.facebook.com/groups/208713719174369/> e-mail [tina.watkins@ntlworld.com](mailto:tina.watkins@ntlworld.com)