



MERRY CHRISTMAS AND A HAPPY NEW YEAR TO ALL OUR MEMBERS

Christmas and New Year Greetings from our Chair



Every member of the DAN Committee joins me in wishing you all a happy Christmas and a healthy, peaceful 2023. Another interesting year with a completely different set of challenges! Our new exhibition space at the Corbett Practice is going well and over the year we have enjoyed a variety of interesting meetings at a number of different venues but how we miss our wonderful Hub. Many thanks to those of you who suggested ideas for next year's programme which we will be outlining at our AGM on Wednesday 18th January, 2023. Please make sure to let Rosie know if you are coming to this meeting.



On the right is a photo of the DAN wreath I took to the Remembrance Day Service. All good wishes, **Helen**

DAN artists at the Railway Station

When the group of Friends of Droitwich Spa Railway Station (FODSRS) was formed, it was decided to install art work on the station in addition to all the magnificent planting schemes. **Helen Karakashian**, as a member of FODSRS and Chair of Droitwich Arts Network, was asked to take on the responsibility of finding local artists to produce art work relevant to the area.



On Tuesday 15th November several works were installed including pen and ink drawings on old maps of Droitwich of Edward Winslow and the Mayflower and John Corbett and the Chateau Impney by talented 6th Form student from Droitwich High School, Lottie Mountford.

In the blocked-up windows of the red brick building on the Worcester side of the station are three art works. Lord of the Manor, by Rosie Philpott of Wonky Droitwich fame <http://www.rosiephilpott.co.uk> and two pastel works by Wendy Simmons

Wendy Simmons (artist), Rosie Philpott (artist), Helen Karakashian (Chair, DAN)

<https://wendysimmonsart.co.uk> These art works were created in collaboration with professional photographer Gail Braznell <https://www.reflectdimages.co.uk> who used a drone to

capture unique angles of the Hanbury Locks and St. Peter's Church and Lychgate. There will be more art work to come on the station as part of this exciting venture. Keep your eyes peeled.

Rosie Philpott says "I am very thankful to 'Friends of Droitwich Spa Railway Station' for giving me the opportunity to have one of my paintings installed at the station. You can find it on the building on the Worcester side (in the bricked-up windows).

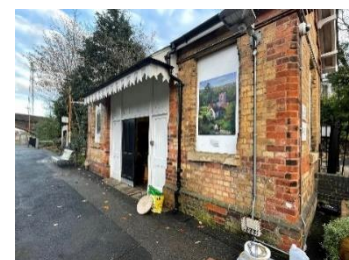
My work is alongside fellow Droitwich Arts Network artist, fabulous Wendy Simmons who worked with her photographer friend Gail Braznell to capture Hanbury Locks, and the talented Sixth Form Student Lottie Mountford. Thank you for this opportunity and there will be more 'wonkiness' to come in the New Year..."



Wendy Simmons also wanted to say "I'm super proud and truly honoured to let you know that two of my paintings have been installed on the Brunel building at Droitwich Spa railway station.

The aluminium prints will be there for quite some time. They feature St Peter de Witton Church and the Hanbury Locks. Thank you to Gail Braznell of Reflected Images for taking the drone shots, allowing me to paint a different view of local landmarks.

Thank you too to the Friends of Droitwich Railway for giving me and other local artists an opportunity to share our work in a much loved and historical part of our town."



2023 Programme – provisional, dates to be confirmed

- **Wednesday January 18th 2023, AGM.** Members and partners are invited to our AGM, food and music will be provided. You will need to RSVP once invites have been sent out.
- **February, date to be announced.** Zoom drawing session.
- **March – a Westlands Dabble day Saturday meeting.** An invitation to local residents will be issued.
- **April – a Tuesday meeting in the Old Library.** An artist demo / speaker for a face-to-face session.
- **May – a Saturday En Plein Air in Lido Park.**
- **June – a Monday after 20th, DIY session in the library.** Bring your own materials
- **July – a Wednesday 5pm – 8pm, a show and tell and poppy making session** in the library.
- **August – Summer Social Event.**
- **September - a Saturday En Plein Air event.**
- **October – A Saturday table top and Auction event.** Make Wreaths.
- **November – a Monday Zoom meeting** with an artist / demo speaker.
- **December – a Wednesday at the Old Cock Drink and Doodle.** Social, fun, art. Paper supplied, no wet paint.

Droitwich Spa Art Society – an opportunity



As reported in last month's DAN Newsletter, The Droitwich Spa Art Society one of Droitwich's oldest art societies has folded due to not having enough members attending its sessions. However, **Alan Davey** one of the final two members, is providing the opportunity for anyone who would like to take over the group and try and bring it back to life to contact him. He said that there is a joint bank account with a small number of funds which can go towards possibly relaunching the club. Call 01905 773289 or email: alan.davey@r-pad.org to get in touch with Alan.

Cosimo Art – John Sewell

Many of you will remember that last year we had a talk by John Sewell who was an intern at the Barber Institute. He was about to set up an online gallery to make it easy for artists to upload their work and create a portfolio and had promised a discount to our members when he rebranded. He has done so now and can be reached on his website at <https://www.cosimo.art/> **Helen Karakashian** recently contacted him and he has given us a **50% discount on the annual fee using the code YEARLYFIFTY.**

Local Art Events

ITALIAN ART AT THE LIBRARY

Rhys has been informed of an exhibition of Italian Art to be held in the Gallery Room of Droitwich Library on the 8th, 9th and 10th of December 2022. It is being organised by a Mr Kevin Hill (who lives in Droitwich). He plans to introduce his friends from Tuscany. Mr Hill has booked the room for all three days. Nobody else will be using the room, allowing free access for visitors at all times. You might want to pop in and take a look!

ARTS & HEALTH ROUNDTABLE - Tuesday 13 December 2022

Invited artists and professionals will discuss how they are looking at arts, health and wellbeing within their work and creating equity. It will also explore Arts Council England's recently published Creative Health & Wellbeing plan working within health and social care.

Chair: **Claire Hilton**, Arts Psychotherapist. Panellists: Joseph Walsh, artist; April Lin 林森, interdisciplinary artist and curator; Sam Metz, interdisciplinary artist, curator and researcher; and Oreet Ashery, artist. Event generously supported by Worcester Arts Council.

All talks are hybrid, taking place from 5-6.30pm in-person at The Art House, Worcester and online via Zoom simultaneously. All welcome. Pay as you decide. Booking is also open for the roundtable - please share with your contacts - <https://www.eventbrite.co.uk/e/arts-health-roundtable-tickets-456923268797>

FANTASTICAL GARDENS OF THE FUTURE, ART WORKSHOP AND TOUR - WORCESTER COMMUNITY GARDEN

Friday December 2nd 10am – 2pm Grandstand Road, Pitchcroft, WR1 3JP. A free drop in event with no booking required. The workshop will take place on the community garden site; it will be hands-on and you will be able to contribute to designing some of the narrative of a new Worcester based game. Steve Dent will give a tour

around Worcester Community Garden and talk about the challenges the community garden already face as a result of climate change. More details of the garden and further workshops [here](#)

YEW TREE ARTIST STUDIOS



This week Dan, Susan, Jennifer and Jane are busy preparing for this upcoming exhibition in Arch 28, The Artery, Worcester. There'll be a range of exciting artwork to see and if you haven't yet seen this new Artery space it's definitely worth a visit. The nearest parking is the Cattle Market car park near The Hive.

Our new Yew Trees artist [Jane Arthur Textile Artist](#) is exhibiting at [Number 8](#) in Pershore until 13 December! Jane is fascinated by landscapes and what defines sense of place. Journeys features here latest work in fabric, paper, paint and stitch responding to the changing seasons, revelling in colour and travelling in real life and the imagination



WORCESTER ART GALLERY – CANALETTO: A VENETIAN'S VIEW

Open until Saturday 7 January 2023 | Worcester City Art Gallery and Museum – charges apply

Celebrating the wonderful work of Canaletto, this exhibition features stunning paintings from Woburn Abbey, Tate, Compton Verney, and Birmingham Museums Trust – together with artworks from Worcester's Fine Art Collection. **Tina Watkins** visited recently and says *"Stunning is the word and an excellent museum too – the sarnies at Little Al's were to die for!"*

Canaletto revolutionised the use of colour, ground and canvas and pioneered the technique of painting from life, sitting in front of the subject outdoors as opposed to his contemporaries of the time who completed paintings in the studio. This exhibition explores Canaletto's work and the impact he had on the generations of artists who followed him.

WORCESTER OPEN ART EXHIBITION 2023

Entries open: 18/10/2022 Deadline closes: 09/12/2022

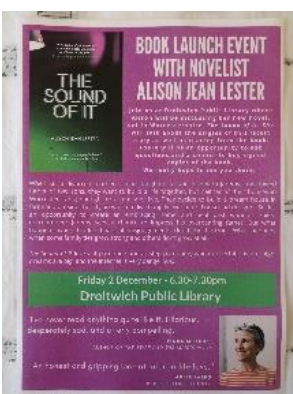
Please read the brief before applying.

The **Worcester Open Art Exhibition** is an open art call aimed towards local artists as a way of encouraging the growth of Worcester City's art scene. Artists accepted will have their work displayed in The Art House (part of UOW) which will be open to the public on select dates. Jan-Feb 2023

Our 2021 exhibition was a huge success and received over 150 submissions. The majority of which came from the local area. This year we are working with Meadow Arts toward Watermark, their forthcoming multi-venue partnership-based project on water and flooding as environmental markers of climate change, which will take place from January to May 2023

We are calling for artists to submit artwork concerned with climate change for an open exhibition to be displayed at *The Art House in 2023. A collaborative project by PITT Studio, School of Art University of Worcester and Meadow Arts.* Please fill out our WO23 application on <https://www.pittstudio.com/worcester-open-23> to apply.

BOOK LAUNCH AT DROITWICH LIBRARY, 2 DECEMBER



Alison Jean Lester is a British American writer who moved to The Spa last year after 25 years in Asia and is delighted to announce that she will be launching her new novel, *The Sound of It*, at the library on 2 December, 6:30-7:30pm.

Alison says *"I'd love to see you there! If that's not convenient, I'll also have a table in WH Smiths on 3 December, 10-12 and 1-3. The novel is set in Worcester, Ladywood and Birmingham, but there is a moment in the Droitwich Waitrose car park!"*

Exhibitions by Members

At our usual venues **Tina Watkins** is exhibiting at **Parks Café** and also at **The Button Tree** during December. **Julia Rollit** is displaying 12 pictures at **Corbett Medical Centre** and **Sheena Howarth** will be showing 4. **Rhys Jones** will continue displaying his work at the space under the stairs at the library.

Being a paid member of Droitwich Arts Network offers lots of opportunity. Our hard working, voluntary group of committee members negotiated the use of display space in a number of popular venues in Droitwich giving members the opportunity to display and sell their art.

Park's Cafe, Victoria Square; There is space for 8 – 12 pictures depending on size. Park's Cafe has supported Droitwich Arts Network for a number of years. Artists provide their details so that members of the public can purchase pictures if they wish.

The Button Tree, Tagwell Road; There is space for 3 pictures. This is an ideal venue for artists that want to try exhibiting their work without feeling the pressure to make sales and there's no charge!

Corbett Medical Centre, Corbett Avenue; Artists have a choice of rooms. The New Waiting Room has space to exhibit 12 pictures, and the Old Waiting Room has space to exhibit 8 pictures. The rooms can be booked separately. Artists provide their contact details so that members of the public can purchase. The displays there really brighten the rooms and members have had success in selling works

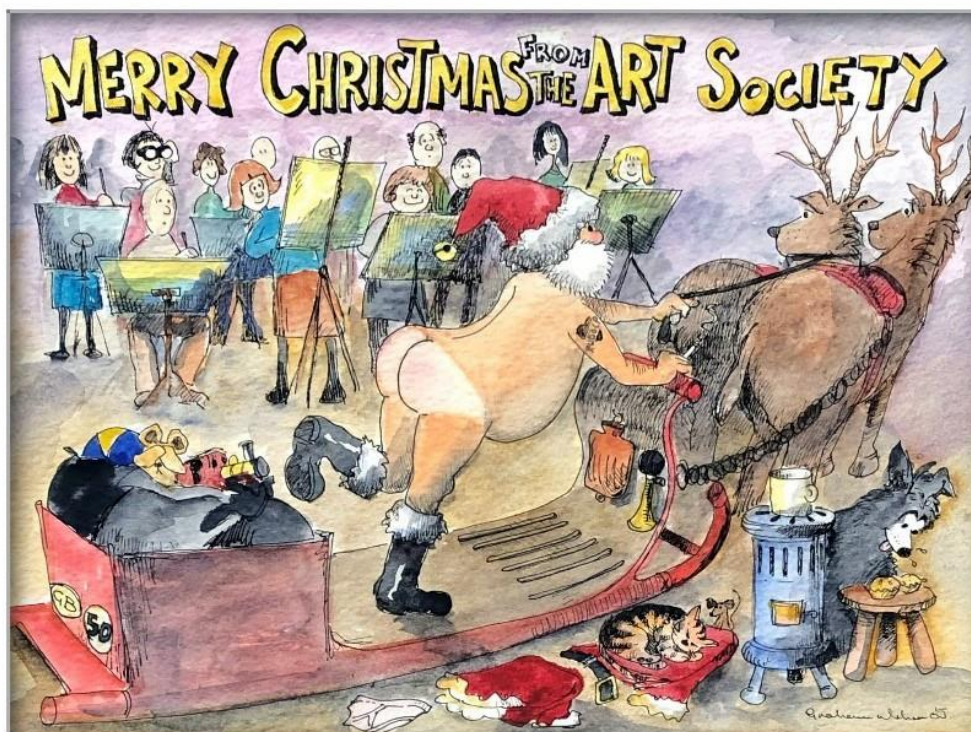
Droitwich Library, Victoria Square; There is space to exhibit 2 or 3 pictures in the small area below the stairs. Again, ideal for just showing a few works.

Members can display their work for one month. Brief guidelines on how to exhibit can be found in the members' area of our website. It is exciting and rewarding to show your work. It would be wonderful to see the wide range of artistic talent of the whole membership on display throughout the year. Please contact Derek Webster to book your venue. derekwebster20@aol.com.

ALL ARTS ALLEY

Thank you to everyone who sent in their splendid Christmas theme photos. Well done all! We now know there is more talent out there and we are asking for more **ANY ART/CRAFT BASED WORK**. I just need photos of your work with any describing information, to show in the coming newsletter. Send email, [HERE](#). **By 30th December**.

Jenny Wilson sent in this rather cheeky Christmas painting of Grahams' and says "A bit cheeky but definitely a Christmassy theme from Graham! Hope you all have a good Christmas, thanks for all your hard work at DAN"



Tina Watkins says *"With this festive wreath of my watercolour and a snowman Santa, I welcome you into the DAN Christmas season and wish you all the very merriest of Christmases and an even merrier New Year!"*



Deborah Watton sent in this photograph and says *"I took this up in Hanbury Woods recently, on a very dull wet day. All my work starts as a photograph, which I then process in Lightroom and Photoshop, adding*



multiple layers, textures and brushstrokes to create the desired image. I print all of my work myself to ensure colours stay true to the intended original and I also choose different papers for printing depending on the image. In this instance the image is printed on Fine Art Archival paper which gives a smooth, matte, watercolour paper effect.

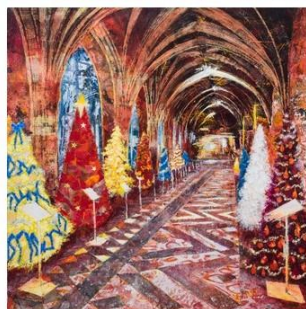
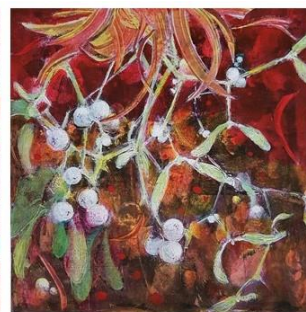
Alison Jean Lester sent in this poem and says *"I have something for you this time! It's a poem. Not your typical spirit of Christmas feeling, but deeply felt."*

I Approach with a Rake

I approach with a rake
the scant remains of a pigeon
slaughtered in my bright, wet grass.
I brace myself for what shines red.
What pigeon parts
could be so round?
The softest feathers cling to the rake
but the red bits roll,
revealing their navels.
Berries of cotoneaster.
A radiant last supper.
A sacrifice within a sacrifice.
A wink of Christmas
before the holly shows its blood.

Alison Jean Lester
November 2021

Susan Birth sent her Christmas images and says *"Here are four Christmas-themed mixed media paintings. I use the images printed on Christmas cards which are available at Yew Trees Artist Studios if anyone would like some."*



David Wornham sent in this short celebratory video clip: <https://youtu.be/hJceeBc2OF8> and explained, "U3A Droitwich Wind Instrument Group (DWIG) celebrated our 7th Birthday on 27th November. We currently have a membership of 10 players of mixed ability and experience and we welcome new members who can play a wind instrument and read music."

We meet on the 1st and 3rd Mondays in each month from 3 to 5 pm at Crowle Platinum Hall.



Outside Morrisons, Bromsgrove, charity event, 1st July 2019

Our web page is: <http://u3asites.org.uk/droitwich/page/54717>

Our Facebook Group is: <https://www.facebook.com/groups/152100418677077/>

Our YouTube channel is: https://www.youtube.com/channel/UCzxByvWbtx_7A3Rb5tnkozQ

Enquiries are welcome without any further obligation to 01905 775840 or Email flexicase@gmail.com

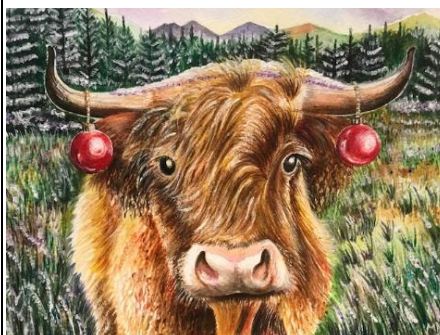
The U3A is a Registered Charity No. 288007

Stephen Evans sent in this painting and says "This is watercolour I enjoyed painting a few years ago which I hope will be suitable Christmas theme for DAN. For reference I used a lovely photo that was sent to me by a photographer friend of mine. I was



so inspired by the charming pose of the robin standing on an old rusty kettle handle in the snow I set about painting it straight away. I was delighted with the finished painting so I put it on display in one of my exhibitions at Park's Café. I was so pleased when a lady liked it so much that she purchased the painting during the first week of the exhibition. For the painting I used watercolour on 16"x20" 300gsm paper.

Michelle Doidge sent in these very seasonal paintings and says "Every year I produce an original painting to make into that year's Christmas card. Some are past ones and some are Christmas pics. The one with the sheep was obviously painted in the year of Covid so was quite timely."



Lyn Sharp sent in these very professional items and says "This is a needle Felted picture I did a couple of years and had printed into Christmas cards. The Robin is a picture made from up cycled jewellery and mounted into upcycled frame I hate waste and upcycle everything I can, fabric, frames and canvases!



Pauline Franks sent in these lovely photos of a painterly present and says "I've attached photos of a box I painted for a friends Christmas present. I painted it with acrylics and a coat of varnish. Inside I put a black velvet insert and some tea lights "



For the latest information visit: <http://www.droitwichartsnetwork.org/> on Facebook
<https://www.facebook.com/groups/208713719174369/> e-mail tina.watkins@ntlworld.com